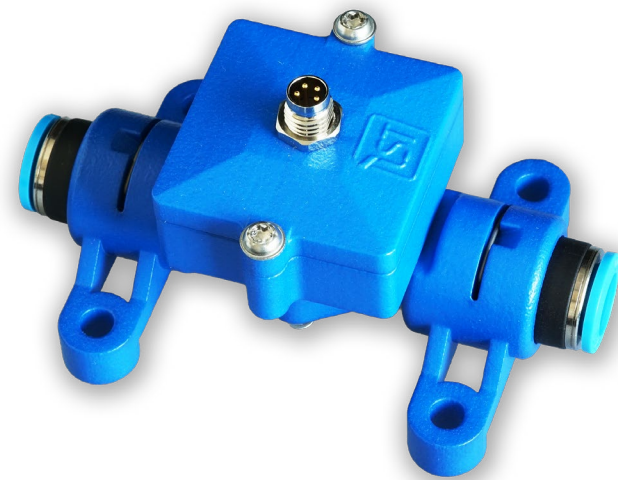


FS calibrated module

Coming soon

Based on our proven FS sensors type, this module offers precise and accurate flow measurements. Engineered to perform even under variable pressure and temperature conditions, it can excel in applications like leakage detection and maintenance monitoring, reducing maintenance costs and supporting compact integration into OEM systems.

- Ready-to-use calibrated gas module with digital output (analog upon request)
- Application specific customization possible
- Flow range 0-45000 sccm (customizable)
- High accuracy, even at variable temperature and pressure
- Easy integration
- Customizable calibrations possible
- Customizable design
- Robust
- Vibration resistant



Do you want to test this product?
Prototypes are available upon request.
Contact us!

Customized sensor solutions for your application

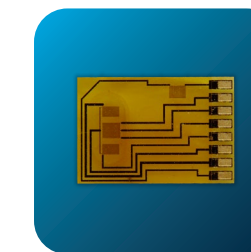
Benefit from an agile co-creation of your next sensor solution. Use our competence at component level and focus on your added value for fast and successful product development - from simple design adaptations to new measuring principles: from concept prototyping to high-volume manufacturing.



innovative
Sensor
Technology

FLOW SENSORS & MODULES

Thermal measuring principle for gas and liquid applications. Easy integration, signal processing and customization



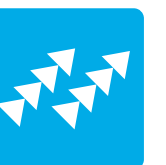
YOUR GLOBAL SUPPLIER
SENSING WHAT MATTERS



Innovative Sensor Technology IST AG
Stegritstrasse 14 · 9642 Ebnat-Kappel · Switzerland
+41 71 992 01 00 · info@ist-ag.com

www.ist-ag.com

physical · chemical · biological





AEROSPACE



APPLIANCE



AUTOMATION



AUTOMOTIVE



BIOTECHNOLOGY



HVAC



HANDHELD DEVICES



MEDICAL



METEOROLOGY



SUSTAINABLE ENERGY

Flow sensors

Thermal gas flow sensor FS7

- Anemometric gas mass flow
- Temperature range -20 °C up to +150 °C
- Ceramic sensor with response time <200 ms
- Excellent sensitivity and reproducibility from low flow rates
- With optional hotmelt housing for positioning (easy customization to fit flow channel geometry)

Product code
103705Product code
103706

FDS.A Gas flow sensor with decoupled heater & temperature elements

- Minimized cross-talk for high sensitivity at low flow rates
- Excellent long-term stability with proven thin-film platinum technology
- High reliability with no moving parts
- Suitable for various technical gases and industrial applications
- Easy fluidic and electronic integration
- Simple calibration and excellent reproducibility over a wide dynamic range

Product code
155846

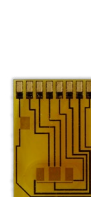
Thermal gas flow sensor FS2

- Calorimetric gas flow sensor for mass flow and direction detection
- 4 structures on one chip for temperature compensation / extended flow range with CTA
- Ceramic sensor with response time <200 ms
- Temperature range -20 °C up to +150 °C

Product code
103663

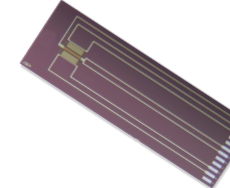
MicroFlowSens MFS02

- For highly sensitive calorimetric mass flow measurements at low flow rates and extended measuring range up to 150m/s in CTA mode
- Glas membrane sensor with fast response time $t_{63} < 10\text{ms}$
- Temperature range from -20 °C up to +80 °C
- High chemical resistance against aggressive gases and vapours

Product code
103743Product code
103746

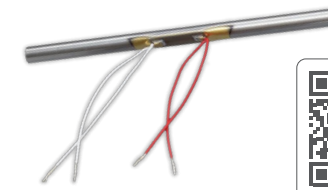
Silicon flow sensor SFS01

- Calorimetric gas mass flow sensor with very low energy consumption
- For flow range up to 3.5 m/s and temperature range up to +80 °C
- Easy to linearize raw signal
- Silicon membrane sensor with response time <5 ms

Product code
105050

Out-Of-Liquid (OOL)

- For sensitive low flow range in liquids
- For usage in aggressive liquids with stainless steel as single wetted material
- For sensitive, anemometric mass flow measurement in ml/h to ml/min range
- Suitable as leakage detector or flow switch

Product code
104171

Flow modules

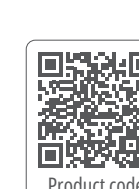
SFS flow module

- Ready-to-use and factory calibrated with <2% f.s. accuracy
- Available in 3 flow ranges: ± 50 , ± 200 , ± 1000 sccm
- Integration ready with digital I²C and 0-1V outputs
- Add-on fluidic adapter available
- Suitable for process control in manufacturing equipment and gas analyzers for gas supply or dosing systems and manifolds

Product code
154807

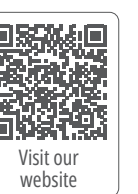
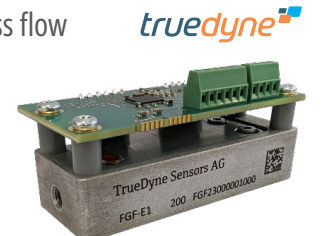
Flow Switch Module with adjustable threshold

- Reliable and reproducible air flow detection
- Thermal anemometric principle without moving parts
- Switched ground output, suitable for alarm or direct control purposes
- Long and reliable operation
- Compact, flat design for easy integration
- Ideal for HVAC systems, e.g. air filter monitoring, dust extractors, gas velocity verification in air supply, air quality monitoring
- Adjustable switching point between ~0.1 – 15 m/s

Product code
156027

FGF – Thermal gas flow and density module

- Multiparametric module for density and pressure compensated gas mass flow
- CleanGas identification
- Binary gas ratio evaluation and flow compensation
- Suitable for medical devices and industrial process monitoring

Visit our
website

Mass flow meter – OOL Module

- Factory calibrated liquid mass flow meter
- Calibration range 0.1...20 kg/h and accuracy of $\pm 3\%$ f.s.
- For sensitive low flow / leakage analysis
- Mass flow and temperature outputs as digital I²C signal via M8 connector
- Compatible with water, oil or alcohol based media

Product code
153331

OOL Bubble Detector

- Detection of gas bubbles in liquid with thermal principle
- Fast response time <6 ms.
- Resolution of ~1 mm sized individual bubbles
- Compatible with aggressive liquids with stainless steel as single wetted material, including coolant, ink and oils

Product code
153312

ist offers a wide range of sensors based on different technologies suitable for any application.

Standard or customized