



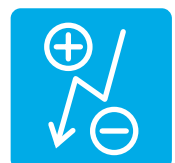
innovative
Sensor
Technology

CONDUCTIVITY SENSORS

Conductivity measurement with high chemical resistance and optional integrated temperature sensor for optimal accuracy



physical · chemical · biological





AUTOMATION



BIOTECHNOLOGY



HANDHELD DEVICES



MEDICAL



PROCESS CONTROL



SOIL TREATMENT



IST offers a wide range of sensors based on different technologies suitable for any application.

Standard or customized

Our conductivity sensor components are designed for system integrators that plan to take advantage of a compact assembly options of conductivity in their products or design a sensor probe and transmitter. All sensors boast fast response times, optimal accuracy and a wide temperature range of -30 °C to 100 °C.

The allrounder: LFS 1107

The versatile allrounder for a wide conductivity range: Stable cell constant from low conductivity values (10µS/cm) to high values 200mS/cm (typical cell constant of 0.42 cm⁻¹)

- Wide conductivity and temperature range
- Resistance to various chemicals
- Excellent long-term stability
- Four-electrode measurement
- Customer-specific sensor available upon request

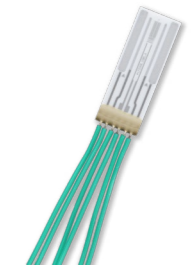


Product code 103876

Conductivity sensor LFS1505 with integrated temperature sensor

Ideal for applications with a conductivity measuring range from 100 µS/cm to 200 mS/cm with integrated temperature sensor.

- Highly linear over wide range for easy calibration
- Resistance to various chemicals
- Four-electrode measurement
- Excellent long-term stability
- Ideal for low-cost solution for handheld instruments in medical technology



Product code 103859

Conductivity sensor LFS1305 with integrated temperature sensor

- Conductivity range 100 µS/cm to 200 mS/cm (typical cell constant of 0.86 cm⁻¹)
- Resistance to various chemicals
- Excellent long-term stability
- Four-electrode measurement



Product code 158044

Commodity conductivity sensor LFS1505

Our LFS1505 thick-film commodity conductivity sensor fits easily into small handheld measuring devices as well as single use and disposable applications.

- Resistance to various chemicals
- Adaptable to the needs of any application
- Single-use application
- Ideal low-cost solution for life science applications



Product code 154008

Conductivity sensor LFS 1710 with integrated temperature sensor

Our LFS1710 is optimal for water quality and waste water treatment applications with a conductivity measuring range from 0.2 mS/cm to 200 mS/cm (typical cell constant of 0.44 cm⁻¹)

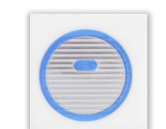
- 4 electrodes and integrated temperature sensors (Pt1000, class F0.3)
- Wide conductivity and temperature range
- Resistance to various chemicals
- Excellent long-term stability



Product code 103876

Conductivity sensor for low conductivity range New

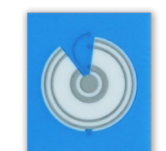
- Optimal for applications with a low conductivity measuring range
- Low conductivity range 1 µS/cm to 15 µS/cm (typical cell constant of 0.2 cm⁻¹)
- 2 Interdigitated electrodes and soldered temperatures sensor (Pt1000, class F0.3) on backside
- Ideal coolant monitoring or water purity measurement



Product code 158919

Conductivity sensor for middle conductivity range New

- Optimal for applications with a middle conductivity measuring range
- Middle conductivity range 2 mS/cm to 20 mS/cm (typical cell constant of 0.66 cm⁻¹)
- 4 concentric electrodes and soldered temperatures sensor (Pt1000, class F0.3) on backside
- Ideal for dialysite monitoring, water quality measurement, and biological and chemical processing



Product code 158615

Customized sensor solutions for your application

Benefit from an agile co-creation of your next sensor solution. Use our competence at component level and focus on your added value for fast and successful product development - from simple design adaptations to new measuring principles: from concept prototyping to high-volume manufacturing.

