



SFS01 EvaKit

Thermischer Strömungssensor

Optimal für die Demonstration und Evaluation des SFS01 (Silicon Flow Sensor)

Eigenschaften & Anwendungsbereiche

Eigenschaften

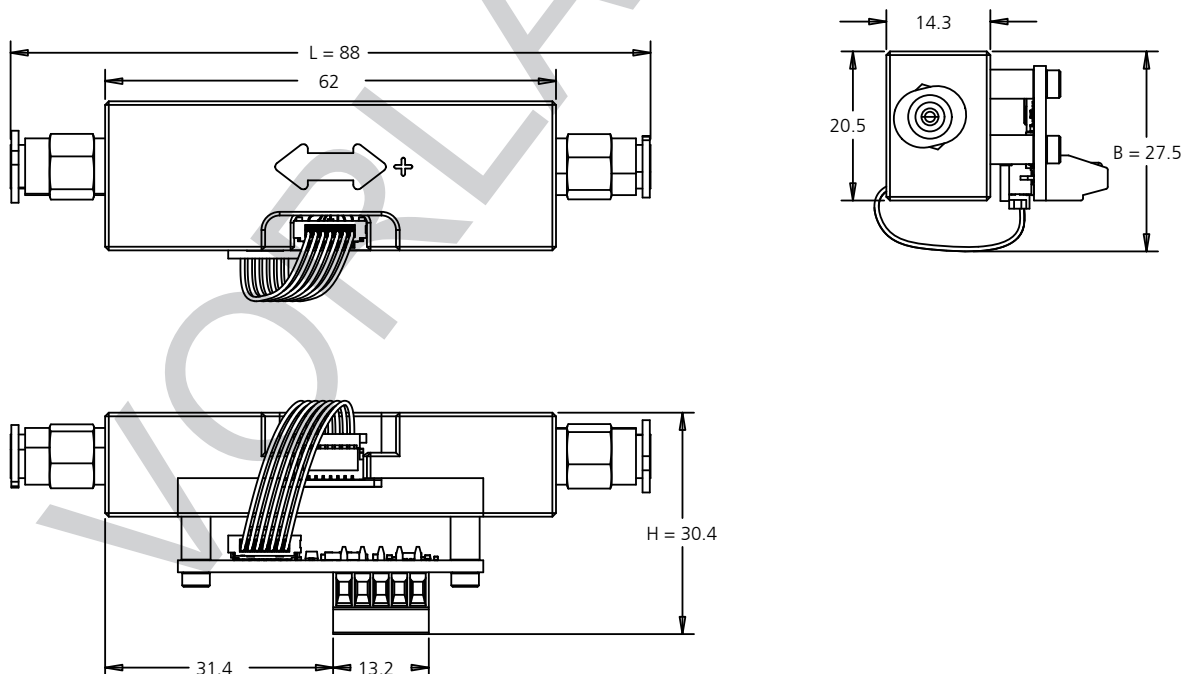
- Messbereich von 0 bis 200 sccm
- Detektion der Strömungsrichtung
- Analoge und digitale (I²C) Anschlüsse
- Pneumatische Anschlüsse für Gas

Anwendungen

- Automatisierungstechnik
- Prozess- und Regelungstechnik
- Medizin- und Biotechnik
- Klimatechnik
- Anwendungen in batteriebetriebenen / portablen Geräten

Abbildung

Veranschaulichung und Dimensionen (in mm) des SFS-Chips



1) Genaue Größe unter Abmessungen zu finden



Mechanische Sensordaten

| | |
|-------------------------------|----------------------------------------------------|
| Integrierter Sensor: | SFS01 |
| Dimensionen (L x B x H): | 88.0 (±0.5) x 27.5 (±1.0) x 30.4 (±0.5) |
| Kanaldimensionen (L x B x H): | 35.0 (±0.15) x 1.0 (±0.05) x 1.0 (±0.05) |
| Pneumatische Anschlüsse: | QSM M5-4 |
| Temperaturbereich: | 0 °C bis +80 °C |
| Lagertemperatur: | -20 °C bis +80 °C |
| Druckbelastung: | Bis zu 1 bar (einseitig auf Membran über 10 Jahre) |

Elektrische Sensordaten

| | |
|-----------------------|---------------------------------------------------------------|
| Versorgungsspannung: | 5 ± 5% V |
| Leistung: | Typ 30 mW |
| Ausgangsspannung: | 0 bis 5 V, ca. 2.5 ±0.2 V bei 0 sccm |
| Digitaler Anschluss: | 3.3 V I ² C (Pull-up Widerstände on-board) |
| Digitales Signal: | Kalibriertes Signal (bis ±200 sccm) Rohwertsignal (digits) |
| Analoge Ausgangslast: | < 1 mA |

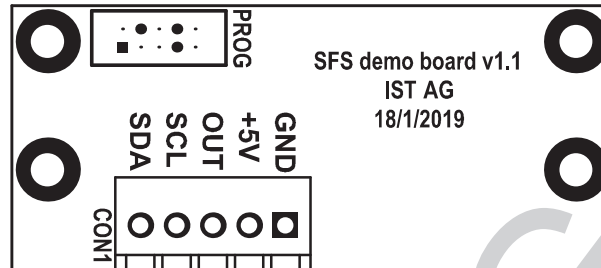
Strömungsleistung

Die nachfolgenden Werte gelten als typisch und sind unter Laborbedingungen erreicht worden, wobei das verwendete Gas Stickstoff war.

| | |
|-------------------------|------------------------------------------------------------------|
| Medium: | nicht aggressive Gase (5-95 % rel. Feuchte, nicht kondensierend) |
| Messbereich: | 0 bis ±200 sccm |
| Sensitivität: | 0.1 sccm |
| Ansprechzeit t_{63} : | 10 ms |
| Genauigkeit: | 3.0 % v.E. |
| Temperatursensitivität: | < 0.25 %/K v.E. |



Pin Assignment



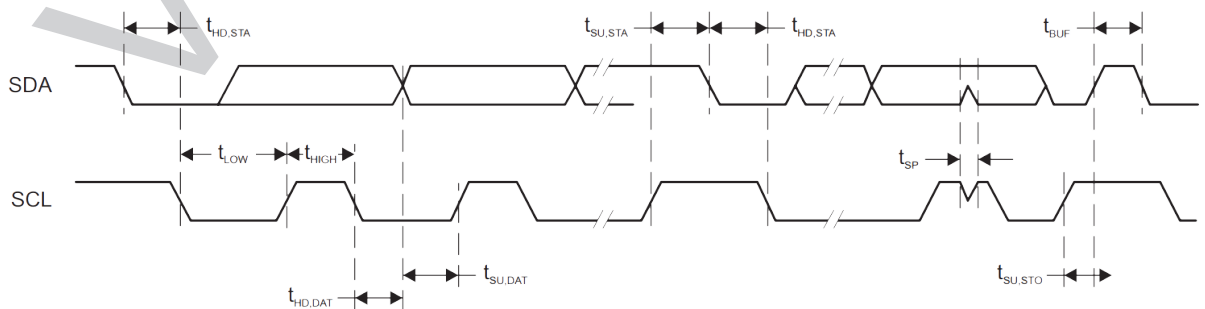
| | | | | |
|--------------------|---------------------|---------------|-----------------------|---------------|
| 1 | 2 | 3 | 4 | 5 |
| SDA Serial Data | SCL Serial Clock | OUT Output | +5V Supply voltage | GND Ground |

I²C Protokoll (englisch)

I²C Protocol Description

For integration with a micro-controller, the SFS Demo Board has an I²C-compatible interface which supports both 100 kHz and 400 kHz bit rates. The default I²C slave address is programmed on 0x28 and can be adjusted in the entire 7-bit address range (0x00 to 0x7F).

| Parameter | min | max | unit |
|--------------------------------------------------------------|-----|-----|---------|
| f_{SCL} SCL clock frequency | 100 | 400 | kHz |
| $t_{HD,STA}$ Hold time (repeated) START | 0.6 | | μ s |
| $t_{SU,STA}$ Setup time for a repeated START | 0.6 | | μ s |
| $t_{HD,DAT}$ Data hold time | 0 | | μ s |
| $t_{SU,DAT}$ Data setup time | 250 | | μ s |
| $t_{SU,STO}$ Setup time for STOP | 0.6 | | μ s |
| t_{SP} Pulse duration of spikes suppressed by input filter | 50 | 600 | ns |





Reading parameters from the module

After successful read instruction the module fills the I²C buffer with the selected parameter. All parameters read from the module, except I²C_address, Serial Number and Firmware Revision, are in signed fixed-point long IQ22 format (4 bytes). To convert them to decimal format the read value has to be divided by $2^{22} = 4\,194\,304$. The minimum value is -512, the maximum value is 511.999 999 762. The resolution of each parameter is $1/2^{22} = 0.000\,000\,238$. I²C_address, Serial Number and Firmware Revision parameters are read in unsigned long format. Additionally, I²C_address is internally masked with 0x3ff.

| | | | | | | | | | | | |
|-------|---------|---|-----|---------|-----|---------|-----|-----|---------|-----|------|
| Start | Address | R | ACK | Data[3] | ACK | Data[2] | ACK | ... | Data[0] | ACK | Stop |
|-------|---------|---|-----|---------|-----|---------|-----|-----|---------|-----|------|

| Data | | Parameter |
|----------|--------------------------------|-----------|
| Data [3] | 1 st byte (highest) | Parameter |
| Data [2] | 2 nd byte | |
| Data [1] | 3 rd byte | |
| Data [0] | 4 th byte (lowest) | |

After transmitting 4 bytes, the module resets the internal timer and waits in command mode for the next command. The module will reboot automatically after 0.5 second of idle or unsuccessful transmission.

Writing parameters to the module

After successful write instruction the module waits for 4 bytes with the new parameter. All parameters except I²C_address, Serial Number and Firmware Revision written to the module are in signed fixed-point long IQ22 format (4 bytes). In order to convert decimal format to IQ22, the decimal value has to be multiplied by $2^{22} = 4\,194\,304$. To reduce the error, this calculation should be done as double precision floating point number. The minimum value is -512, the maximum value is 511.999 999 762. The resolution of each parameter is $1/2^{22} = 0.000\,000\,238$. I²C_address, Serial Number and Firmware Revision parameters are written in unsigned long format. Additionally, I²C_address is internally masked with 0x3ff. Please mind that the new I²C address applies after reboot. The module requires up to 1 ms after stop bit to flash the internal memory with the new parameter.

| | | | | | | | | | | | |
|-------|---------|---|-----|---------|-----|---------|-----|-----|---------|-----|------|
| Start | Address | W | ACK | Data[3] | ACK | Data[2] | ACK | ... | Data[0] | ACK | Stop |
|-------|---------|---|-----|---------|-----|---------|-----|-----|---------|-----|------|

| Data | | Parameter |
|----------|--------------------------------|-----------|
| Data [3] | 1 st byte (highest) | Parameter |
| Data [2] | 2 nd byte | |
| Data [1] | 3 rd byte | |
| Data [0] | 4 th byte (lowest) | |

After receiving 4 bytes, the module resets the internal timer and waits in command mode for the next command. The module will reboot automatically after 0.5 second of idle or unsuccessful transmission.

Exit command code

After receiving this command, the module returns to normal operation, taking the new parameters' values except the I²C address.

| | | | | | | |
|-------|---------|---|-----|-------------|-----|------|
| Start | Address | W | ACK | Data = 0xA1 | ACK | STOP |
|-------|---------|---|-----|-------------|-----|------|



Reboot

After receiving this command, the module reboots.

| | | | | | | |
|-------|---------|---|-----|-------------|-----|------|
| Start | Address | W | ACK | Data = 0xA2 | ACK | STOP |
|-------|---------|---|-----|-------------|-----|------|

Typical parameter's read sequence

To read parameter(s) from the flash memory please follow steps:

1. Write 0xA0 to the module – start the command mode
2. Wait 1 ms
3. Write 0x00...0x07 to the module – an address of the parameter
4. Wait 1 ms
5. Read 4 bytes from the module
6. If needed repeat steps 3-5 for another parameter
7. Write 0xA1 to the module – exit command mode

Typical parameter's write sequence

To write parameter(s) to the flash memory please follow steps:

1. Write 0xA0 to the module – start the command mode
2. Wait 1 ms
3. Write 0x20...0x25 to the module – an address of the parameter
4. Wait 1 ms
5. Write 4 bytes to the module
6. Wait 1 ms
7. If needed repeat steps 3-6 for another parameter
8. Write 0xA1 to the module – exit command mode or 0xA2 – reboot the module

Parameter's description

Parameters: Flow A, Flow B, Flow C, Flow D are used to calculate flow from heater's power, and fluids temperature using equation:

$$flow = A + B \frac{RAW}{2^{10}} + C \left(\frac{RAW}{2^{10}} \right)^2 + D \left(\frac{RAW}{2^{10}} \right)^3$$

Where:

A: flow A, B: flow B, C: flow C, D: flow D

RAW: Raw flow value

Parameter Flow's Range limits the maximum and minimum calibrated flow's readout from the module. It should be written as the last calibration point (or slightly higher). It prohibits the user to measure the flow outside the calibration's range.



Bestellinformation

| | |
|--------------------------------|------------------|
| Modul | SFS01 EvaKit |
| Bestellnummer | 105059 |
| <i>Ehemalige Bestellnummer</i> | <i>350.00330</i> |

Zusätzliche Dokumente

| | |
|------------------|-----------|
| Datenblatt | DFSFS01_D |
| Application Note | AFSFS01_E |

VORLÄUFIG



Innovative Sensor Technology IST AG, Stegrütistrasse 14, 9642 Ebnat-Kappel, Schweiz
Tel.: +41 71 992 01 00 | Fax: +41 71 992 01 99 | Email: info@ist-ag.com | www.ist-ag.com

Alle mechanischen Abmessungen gelten bei 25 °C Umgebungstemperatur, falls nicht anders angegeben • Alle Daten ausser die mechanischen Abmessungen dienen nur Informationszwecken und sind nicht als zugesicherte Eigenschaften aufzufassen • Technische Änderungen ohne vorherige Ankündigung sowie Irrtümer vorbehalten • Die Informationen auf diesem Datenblatt wurden sorgfältig überprüft und werden als richtig angenommen • Keine Haftung bei Irrtümern • Belastung mit Extremwerten über einen längeren Zeitraum kann die Zuverlässigkeit beeinflussen • Alle Rechte, insbesondere die elektronische kommerzielle Vervielfältigung, vorbehalten • Ohne schriftliche Genehmigung ist es nicht gestattet, die Inhalte dieses Datenblattes im Ganzen oder Teile daraus in elektronische Datenbanken, Internet oder auf CDROM zu vervielfältigen • Technische Änderungen bleiben vorbehalten.