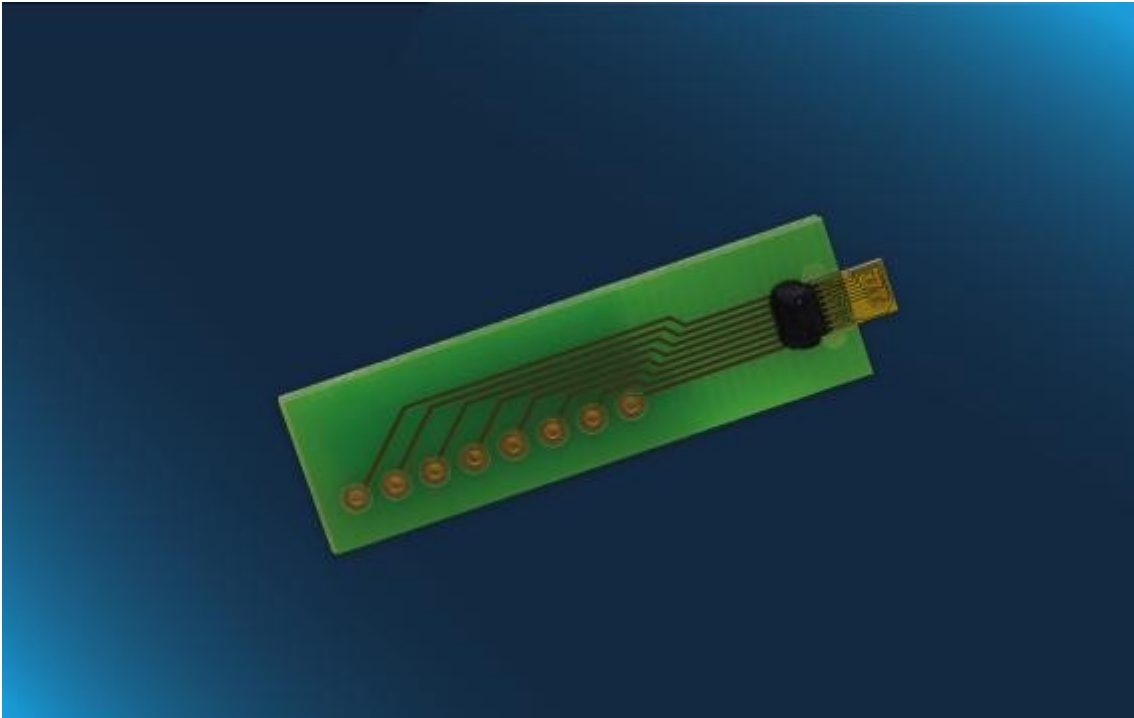


## MFS02 on PCB (exposed)



Gas flow sensor with flow range from 0 to 1.5 m/s (full bridge mode), temperature range from -20 °C to +80 °C, fast response time, mounted on a PCB for easy integration

MicroFlowSens technology for fast flow measurements. Thermal gas flow sensor with ultra low thermal mass resulting in high sensitivity and fast response time.

**Product Name:** MFS02.PEXP.0

**Medium:** Gas Flow

**Strömungsrichtung:** Two directions (kalorimetric)

**Betriebstemperaturbereich:** -20 °C to +80 °C

**Chipgrösse/Abmessungen:** 5.0 x 3.4 x 0.5 mm; PCB: 34.2/37.4 x 10.8 x 1.0/2.0 mm

**Anschluss:** Solder contacts

**Messbereich (full bridge mode):** 0 m/s to 1.5 m/s resp. 0 ml/min to 100 ml/min

**Flow range CTA mode:** 0 m/s to 150 m/s resp. 0l/min to 10 l/min

**Ansprechzeit T63:** < 10 ms

**Sensitivität:** 0.0003 m/s (20 µL/min)

**Substrat:** Glass

**Product Old code:** 050.00267

**Product code:** 103746

## Product details

### Benefits & Characteristics of the MFS Micro Flow Sensor

- Excellent solution for applications with high flow rates and fast response time in CTA mode
- Very high measuring dynamic with CTA mode (10'000'000 : 1) without bypass
- Excellent for the measurement of very low flow rates and leakage detection with bridge mode
- High chemical resistance against aggressive gases and vapors
- Different sensitivities and circuit topologies available
- Detection of flow direction

[Customer-specific sensor available upon request.](#)

### Product description MFS - Micro Flow Sensor

The IST AG MicroFlowSens (MFS) technology was developed for fast flow measurements. Due to the membrane system, the thermal mass is reduced to the minimum resulting in a very fast response time and low power consumption. In addition to measuring flow rates, the MicroFlowSens offers an outstanding sensitivity and is able to detect flow direction. The MFS flow sensor is optimal for limited space system integration and is available as integrated sensor on a PCB.

The MFS thermal flow sensor can be used in a wide flow range from 0 to 150 m/s (CTA mode) and in a temperature range from -40 °C to +80 °C. It is used for flow measurement of a wide variety of gases. A special feature of the MFS sensor is that it is also suitable for industrial flow applications with smoke or exhaust gas development. The MFS sensor can be operated in either anemometric or calorimetric mode. It is also suitable for measuring the flow direction. MFS flow sensors are based on a photosensitive glass substrate with a thin polymer layer that serves as a membrane.

The IST AG MFS gas flow sensor is optimal for measurements in process control, hand held devices and in medical applications.

## The online shop

Quantity (pieces)	Price (per piece)
-------------------	-------------------

5-49	CHF 140.00
------	------------

50-99	CHF 130.00
-------	------------

100-150	CHF 120.00
---------	------------

Lager: **102**